



Kapakapanui School is a restorative practice school

Restorative Practice is a relational approach to managing school life grounded in beliefs about equality, dignity, mana and the potential of all people.

The Restorative Practice model focuses on building and maintaining positive, respectful relationships across the school community and aims to maintain and restore relationships. By building and maintaining positive, respectful relationships within a school, staff to staff, staff to student and student to student, issues are more easily managed.

Restorative Practice is based on a set of best practice tools and techniques to support a consistent and sustainable approach to managing positive, respectful relationships within the school.

Restorative Practice has four underlying principles:

- Positive interpersonal relationships are a major influence on behaviour
- A culture of care supports the mana of all individuals in the school community
- Cultural responsiveness is key to creating learning communities of mutual respect and inclusion.
- A restorative approach leads to individuals taking responsibility for their behaviour.

A School-wide Approach

Quality teaching is integral to student learning and quality relationships. Building positive constructive relationships with learners is a key competency for teachers. Kapakapanui School believes in strong, positive constructive relationships to enable all to achieve maximum potential and growth.

Kapakapanui School utilises a variety of strategies, tools and programmes to support Restorative Practices. Examples are

- Co constructing classroom/pod treaties
- Embedding school values throughout the school-Te Ara Pathway
- Promoting wellbeing eg Mindfulness and [Zones of Regulation](#)

- Sensory breaks and use of sensory desks in all classes
- Restorative chat script and flow chart (see below)
- Thinking sheets-Senior and Junior templates
- Our Whānau system and playground Mediators-trained senior students who meet weekly with our APs. Mediators are available in the playground to sort out minor problems.
- Duty teachers who are on duty throughout the school at all break times. Teachers have designated areas to cover the school.
- Involving and informing parents and whānau
- We may involve or work with outside agencies such as RTLBs, KYS, CAMHS

Kapakapanui School Values

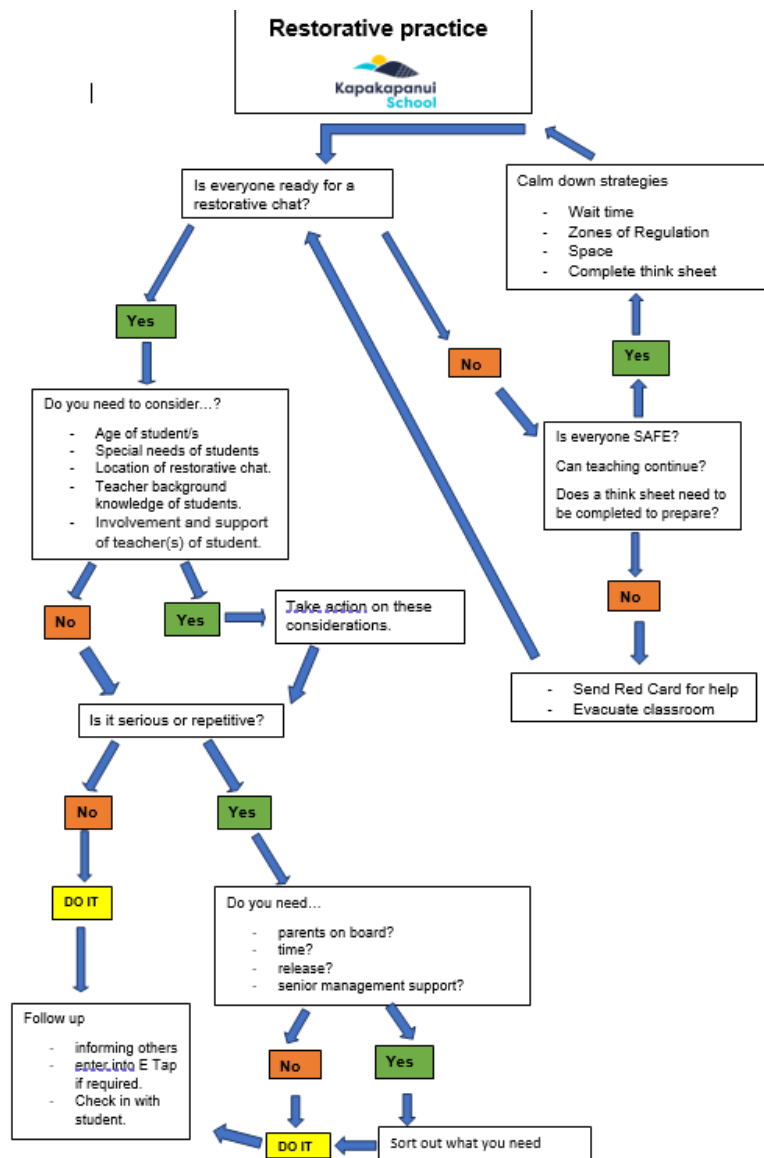
- Kotahitanga (unity & togetherness)
- Manaakitanga (kindness, caring, respect)
- Whanaungatanga (relationships, sense of belonging, family / whānau)
- Kaitiakitanga (responsibility to the land / environment, sustainability)
- Whakaaro (Thinking)
- Manawanui (perseverance)

Record Keeping

Staff record behaviour issues into Etap-our SMS (Student Management System). The class teacher(s), Team Leaders and Senior Management receive notifications. Etap notes include

- Name(s)
- Location and type
- Type and description of behaviour, and any action taken
- Consequences applied. Examples include- Restorative chat, loss of privilege, time out and restrictions.

Restorative Practice Flowchart (see below)



Teacher Script for the Restorative Chat

- **Tell the story**
 - What happened? Tell me what happened when..? What were you thinking when it happened? What are you thinking now about what happened? How does this fit into our school values?
- **Explore the harm**
 - Who do you think has been affected? Who else? In what way? What do you think it must have been like for them?
- **Repair the harm**
 - What needs to happen to put things right? What do you think _____ needs to hear/see from you? Is there anything else you can think of that might help?
- **Reach an agreement**
 - If this happens again what will you do differently? What do you need from me/us to support you? What will the plan for the future include?

- **The future**
 - When shall we check in with you to see how you're going? What will happen if our outcomes haven't been reached?

Serious Behaviour/Incidents

- Where possible Restorative Practices still take place.
- Stand-downs, suspensions, exclusions and expulsions may be considered depending on the nature of the behaviour or incident. Refer to [MOE guidelines](#) BEFORE undertaking any of these actions.

Supporting Procedures

- Bullying and Online Bullying-Schooldocs
- Stand-down, Suspension, and Exclusion Procedures